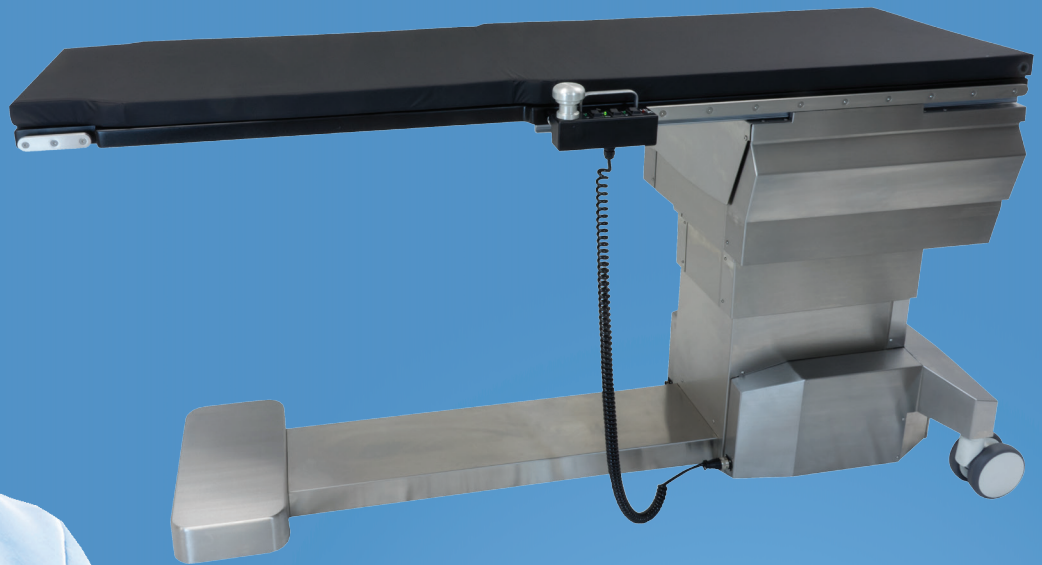




ISR G3

Vascular imaging table with ISO Roll



idi

Image **Diagnostics, Inc.**
Safety, Simplicity, Quality

Full surgical articulation in a four way manual float table - Iso-centric roll and Trendelenburg tilt

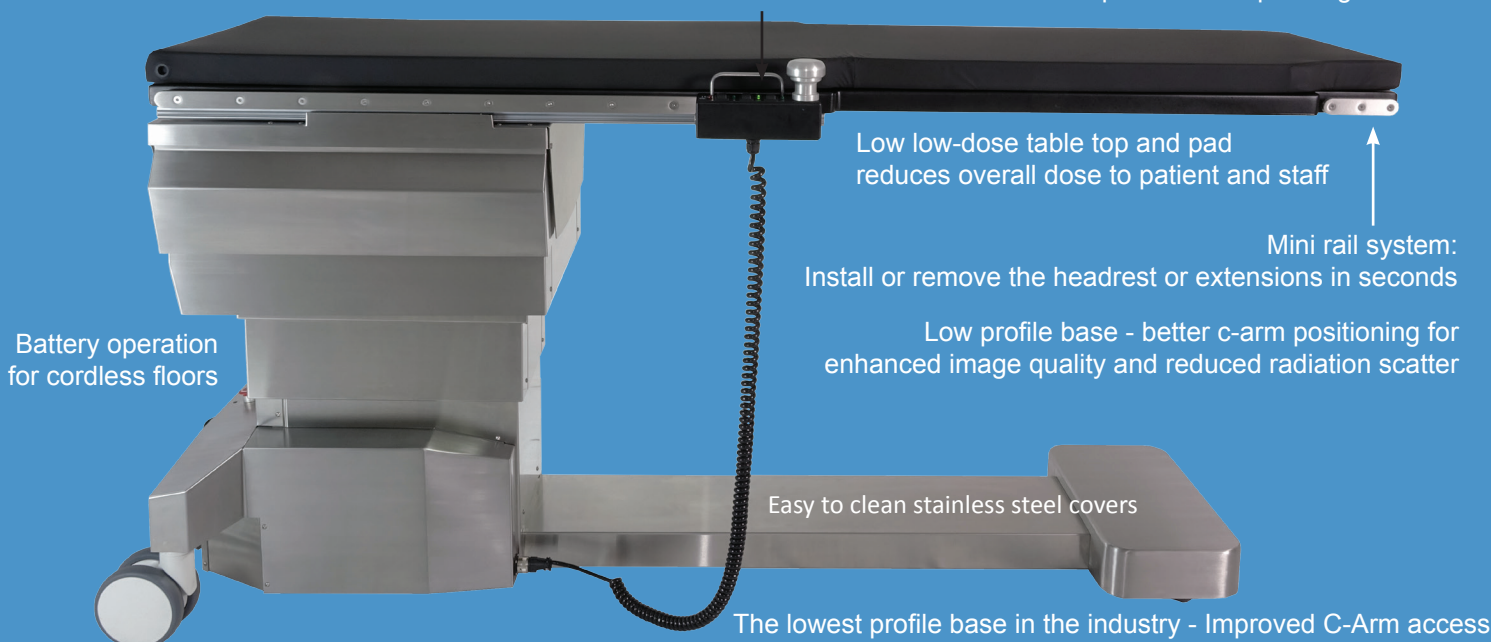
The Image Diagnostics ISR G3 is the flagship of the Aspect series table line; the preferred imaging solution during interventional and vascular procedures. Featuring true iso-centric lateral roll, anatomy on the iso axis remains centered in the fluoroscopic field of view.

The ISR G3 provides longitudinal tabletop float of 32 inches in a very compact platform enabling comprehensive coverage throughout the anatomical imaging area without C-arm movement - and does so in a table with an ideal overall length of only 84 inches. With 68" of imaging area standard - 80" with optional head rest or peripheral extension. Full body imaging coverage is possible in even the tallest patients.

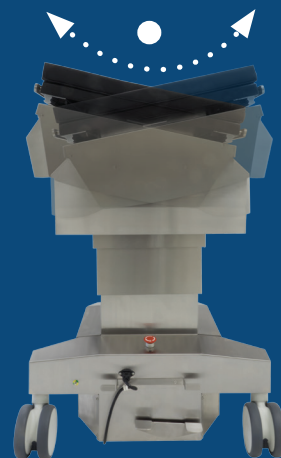
A high-quality carbon fiber tabletop and 2" thick tabletop pad deliver minimal total x-ray attenuation.

Elevate and tilt functions are fully motor driven - no hydraulics - lower cost of service and no dangerous oil leaks!

Complete table control at your finger tips - panning and motorized functions combined into one easy to use control handle
- No need to switch between a pendant and panning control



- **Safety and functionality** - Lock out motorized functions without losing panning ability. Accidental release of the panning control is prevented by an intuitive handle release design. Operator retains panning capability during a procedure for positioning adjustments. No need repeatedly lock and unlock the panning handle.
- **Extensions and Imaging** - A mini-rail system on the head end of the table permits the installation of: headrest, tray extensions and accessories - in seconds. There are no imaging artifacts in the main body of the table top. Roll and image into a lateral through the table edges or into a steep oblique – without side rails in the field of view.
- **Reliability and simplicity of design** - IDI is a market leader in advanced vascular imaging tables. Intuitive controls and long term reliability.



The ISR G3 table with patented $\pm 12^\circ$ isocentric lateral roll. with stop-at-level

ISR G3 Table motions



Motorized Elevation:
12"



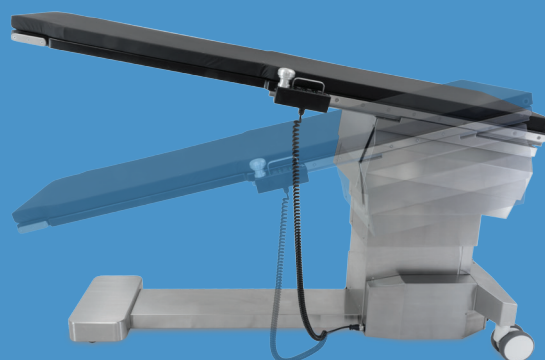
"Easy-float"
longitudinal float 32"



"Easy-float"
transverse float 8"



$\pm 12^\circ$ isocentric lateral roll.



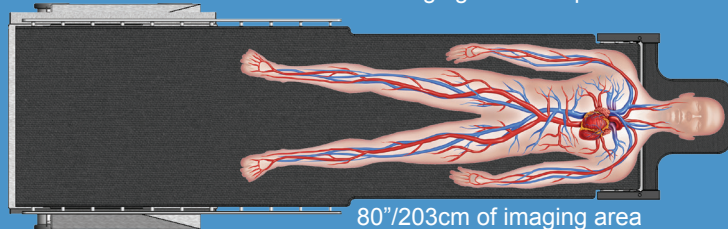
Trendelenburg tilt $\pm 12^\circ$ with
auto "stop-at-level"

ISR G3 Table assets

Artifact-free imaging, with or without a headrest

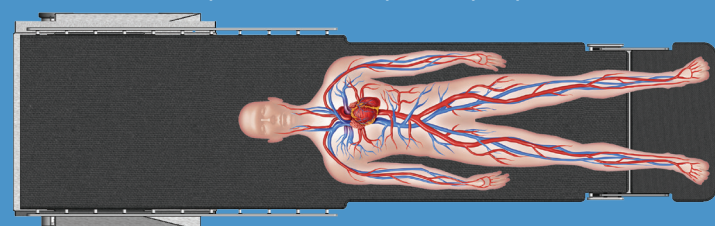
Standard tabletop shown with optional head extension

← Head-to-toe imaging of a 6' 8" patient →



80"/203cm of imaging area

Standard tabletop shown with optional peripheral extension



Very large radiolucent imaging area. Low AL equivalency
carbon fiber top for maximum safety to patient and staff.

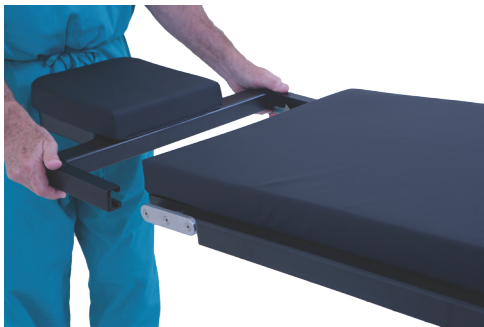


For easy positioning and cable management, table
controls connect on either side of the front or rear of the
table pedestal.



2-position table locking from a dual pedals: Full Lock,
Full Unlock for easy transport and positioning.

ISR Optional Accessories



Headrest extension

Articulating carbon fiber headrest, Attaches to the imaging end of the standard tabletop.



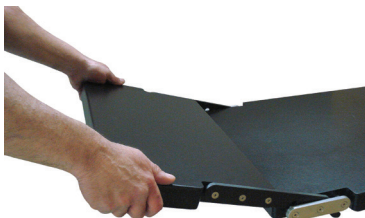
Armboard

Quick-release, rail mounted
Requires Clamp-on Accessory Rail.



Tabletop Catheter Tray Extension

24" wide, mounts to imaging end of table only. Requires tabletop X100-2492. The maximum weight this extension can support is 20 Lbs. or 9 Kgs.



Peripheral Extension

Carbon fiber extension, mounts to imaging end of table only. 22" wide - requires tabletop X100-2492. Maximum weight for this extension is 25 lbs or 11.4 Kgs.



Clamp-on Accessory Rail

For attaching accessories to the table top. Rail is 6" long x 3/8" thick x 1-1/8" high.



Arm Board

Carbon fiber, shoulder mount. Includes pad and strap.



Radiation Shield

Articulating, rail-mounted. Attaches to table side-rail at base end of table, either side, adjustable. Articulating joint allows shield to conform to table contour. Snap-on upper section above level of tabletop is removable.



Foot control

Foot control for Aspect 100-4T G2 table. Foot control motions are: elevate/lower and Trendelenburg down/up.



VAB Armboard

Carbon fiber, one-piece, extra wide armboard for vascular access procedures.



Tabletop Catheter Tray Extension

24" wide. Mounts to pedestal end of table only. Maximum weight this extension can support is 20 Lbs. or 9 Kgs.

Side-rail clamp

Rotating, with socket for attachment of accessories with 5/8 inch circular post.



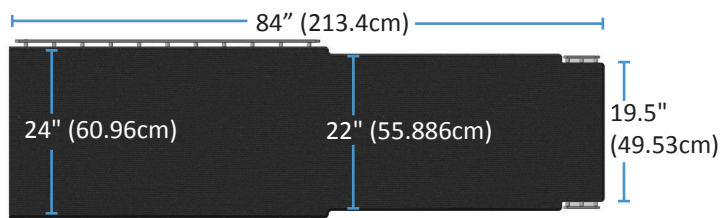
Anesthesia Screen Holder

Flexible "hoop" style can be mounted to standard accessory rails with optional rotating side clamps (required) or directly mounted to the A100-2317 Headrest Extension (Right photo).

ISR Specifications

Table movements

- 4-way manual floating tabletop with panning hand control.
- Longitudinal tabletop travel: 32" (81.3 cm).
- Transverse tabletop travel: 8" (20.3 cm).
- Trendelenburg Tilt: $\pm 12^\circ$ with automatic "stop-at-level" positioning and longitudinal safety lockout when in trendelburg.
- Iso-centric lateral roll: $\pm 12^\circ$
- Transverse float is available regardless of tilt or roll position.
- Dual-wheel caster system with 2-position locking system: total unlock, and total lock
- Automatic locking of longitudinal float when table is not level
- Aspect ISR G3: Elevation: 31" - 43" (84-109cm) without tabletop pad.



- Top includes built in recessed side rails - 5" (13 cm) at the head end table. Facilitates the use of removable headrest and peripheral extension (optional) as well as catheter tray extension (optional)

Tabletop construction

- Carbon fiber, foam core, low x-ray attenuation construction

Electrical

- Electrical power requirement: 115VAC < 10amps, 230V optional.
- Full operation from internal battery – includes battery status indicator. Battery capacity 14Ah
- 20' (6 meter) power cord.

Standard accessories

- Tabletop Pad 2" thick, memory foam construction.
- Panning Hand Control, Rail-Mounted
- Pendant hand control
- Patient Restraint Straps (2)

Weight

- Patient weight capacity: 600 lbs. (272 kg)
- Table weight: 605 lbs. (274 kg)

Certifications:

- ETL listed to IEC 60601-1-6 3rd Edition
- IEC 60601-2-46.



idi

Image Diagnostics Inc.

310 Authority Drive
Fitchburg, MA 01420 USA
(877) 304-5434
imagediagnostics.com

